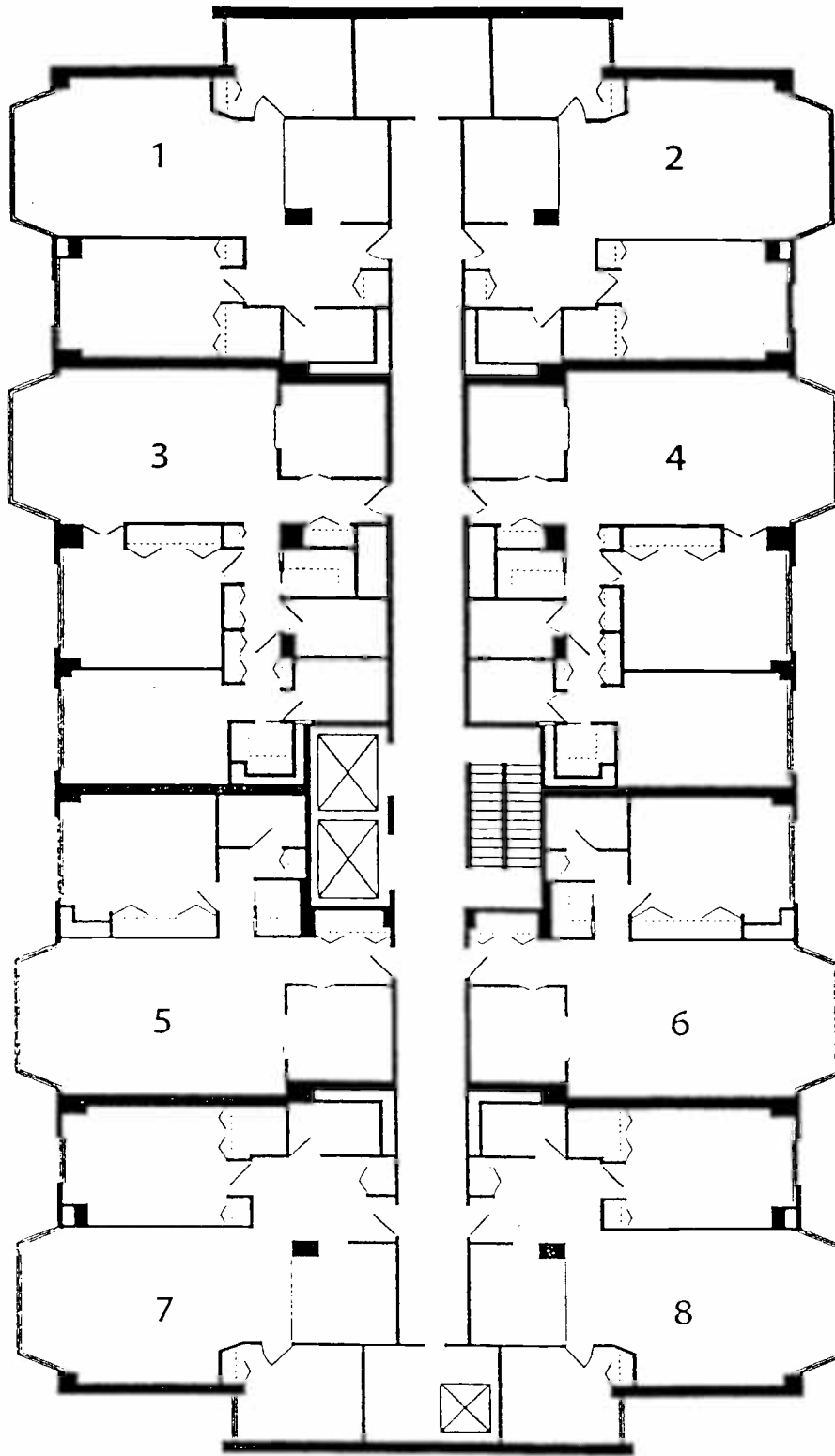


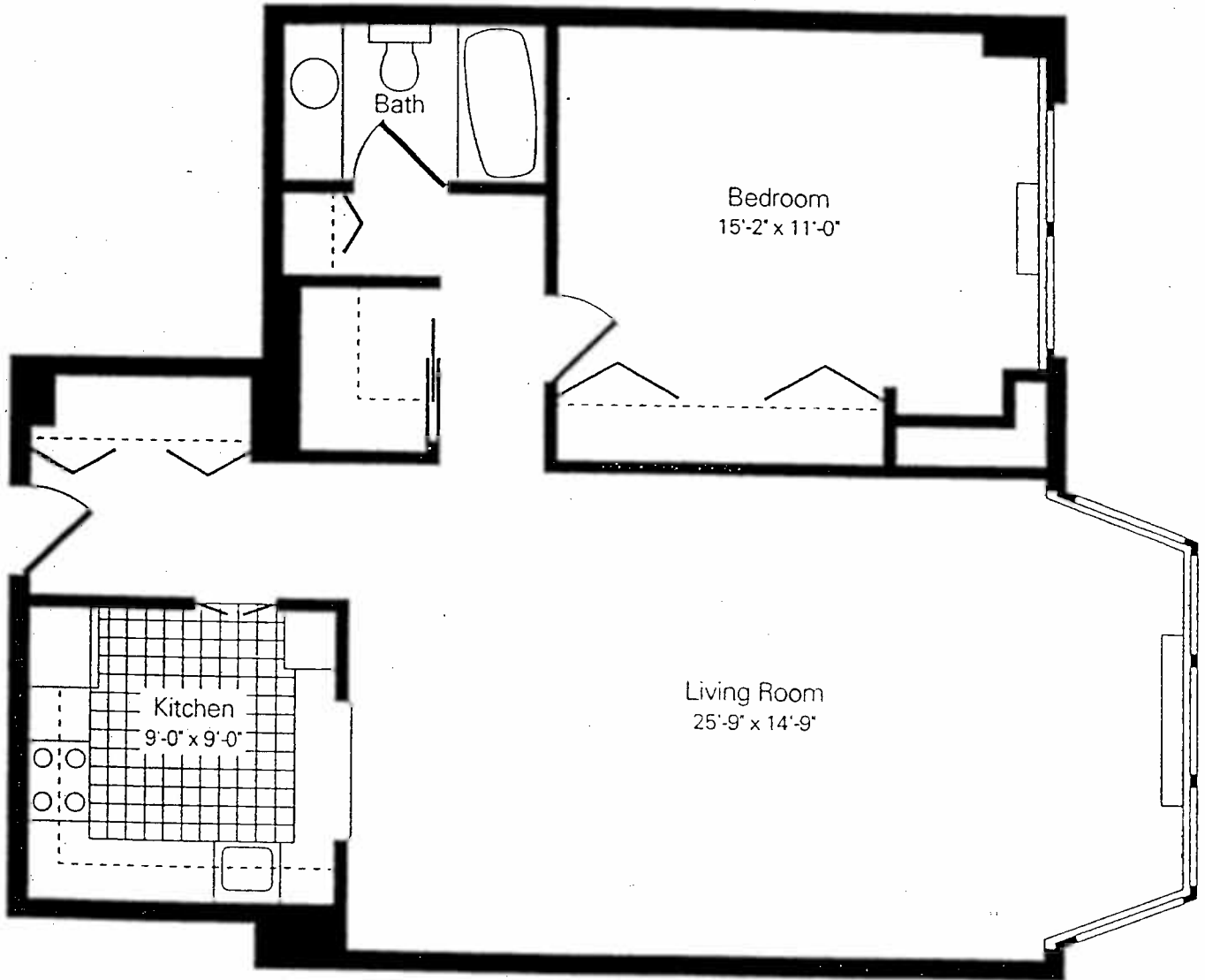
FULL FLOOR PLAN



525
HAWTHORNE PLACE

THE BALMORAL

Spacious one-bedroom residence with large living/dining room and angled bay windows for a panoramic view of the city. Eat-in kitchen with pass-through space for entertaining. Full bath and plenty of closet space.

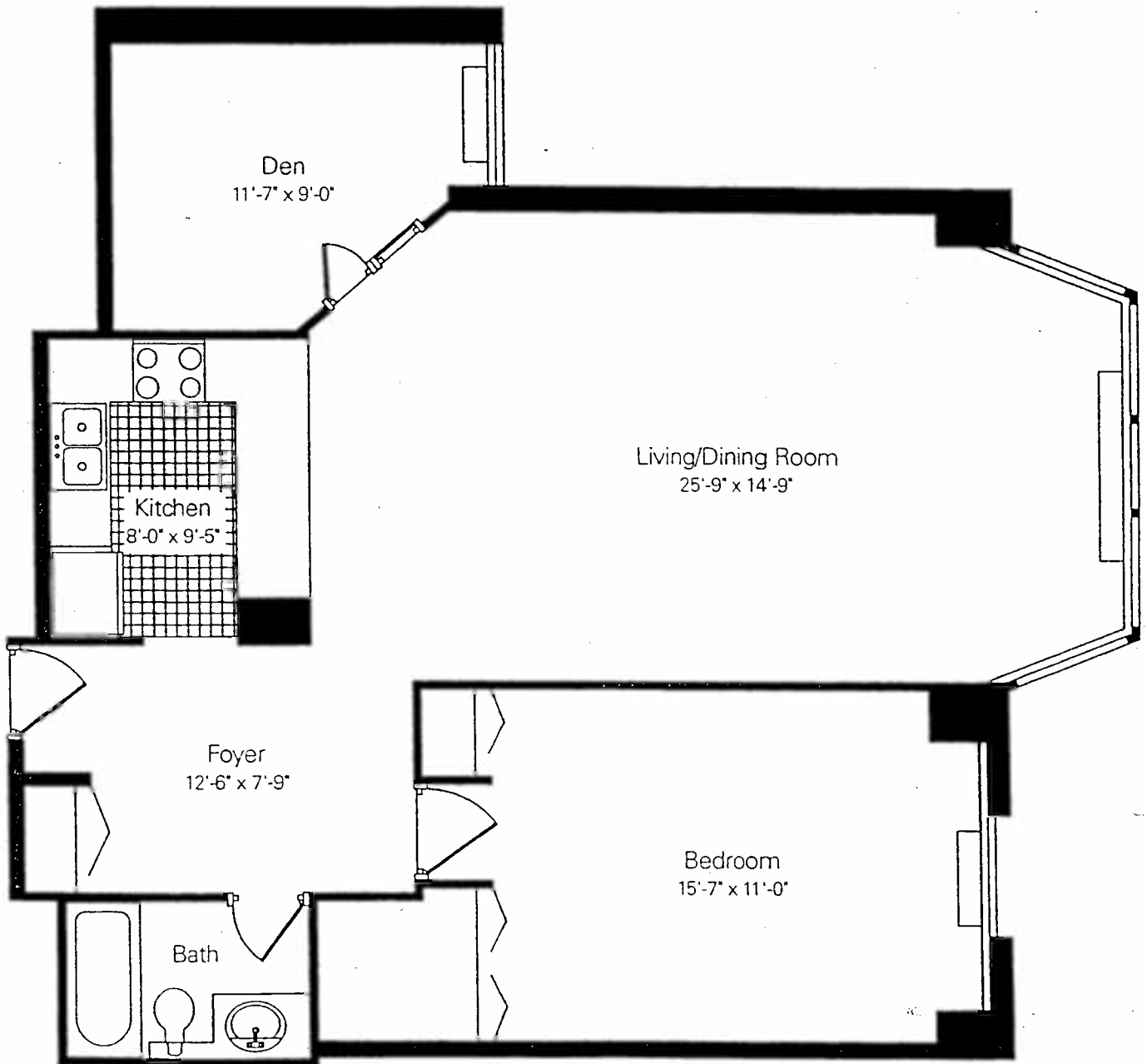


525
HAWTHORNE PLACE

525 HAWTHORNE PLACE • CHICAGO, IL 60657 • TEL (773) 525-8272 • FAX (773) 529-6755

THE CHAMBORD

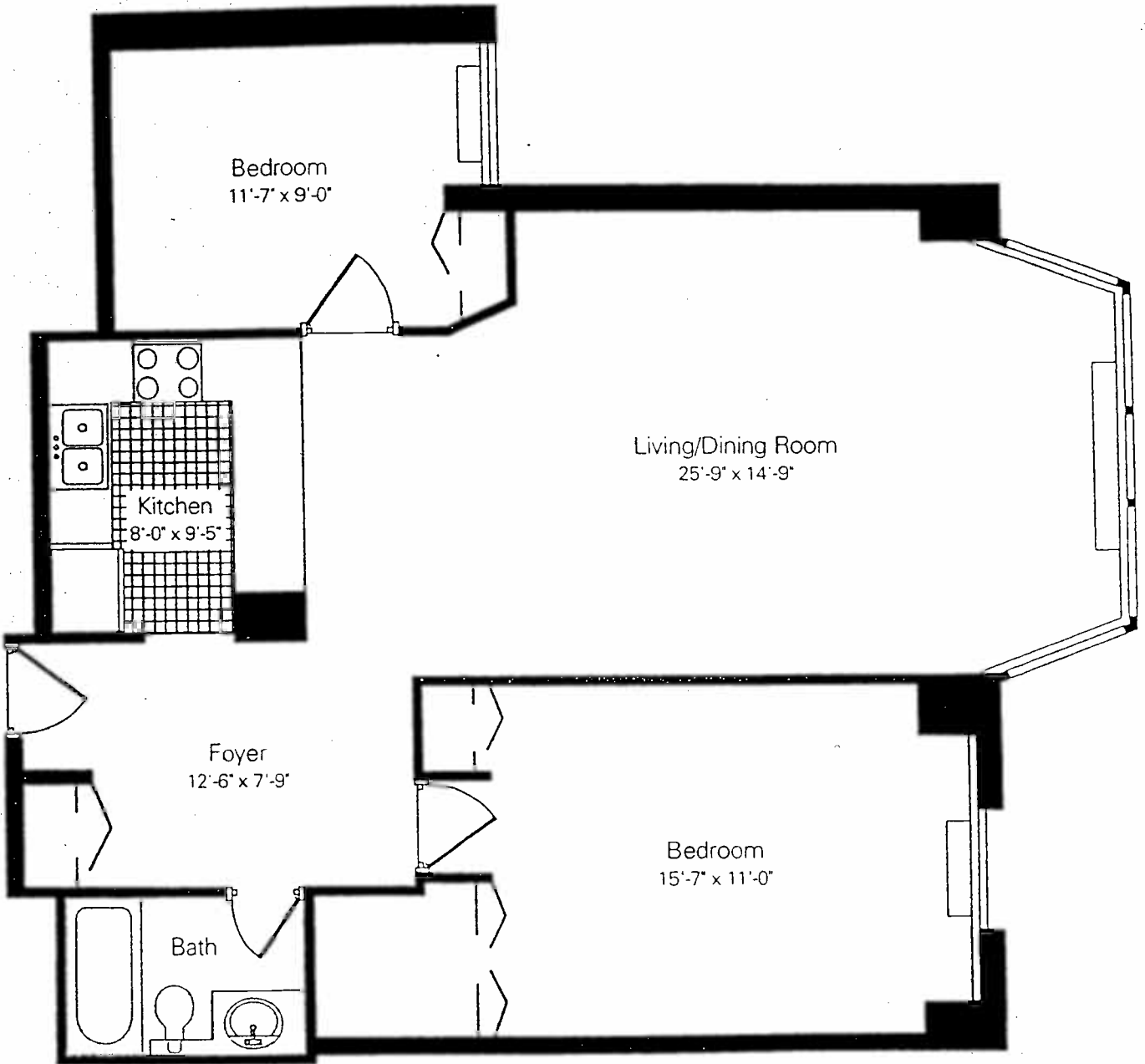
Spacious corner residence with den featuring glass French doors, and living/dining room that provides plenty of room for entertaining. Angled bay windows provide a panoramic view of the city. Full bath, open kitchen and lots of closet space.



525
HAWTHORNE PLACE

THE WINDSOR

Spacious two-bedroom corner residence with living/dining room that provides plenty of room for entertaining, as well as angled bay windows for a panoramic view of the city. Full bath, open kitchen and lots of closet space.

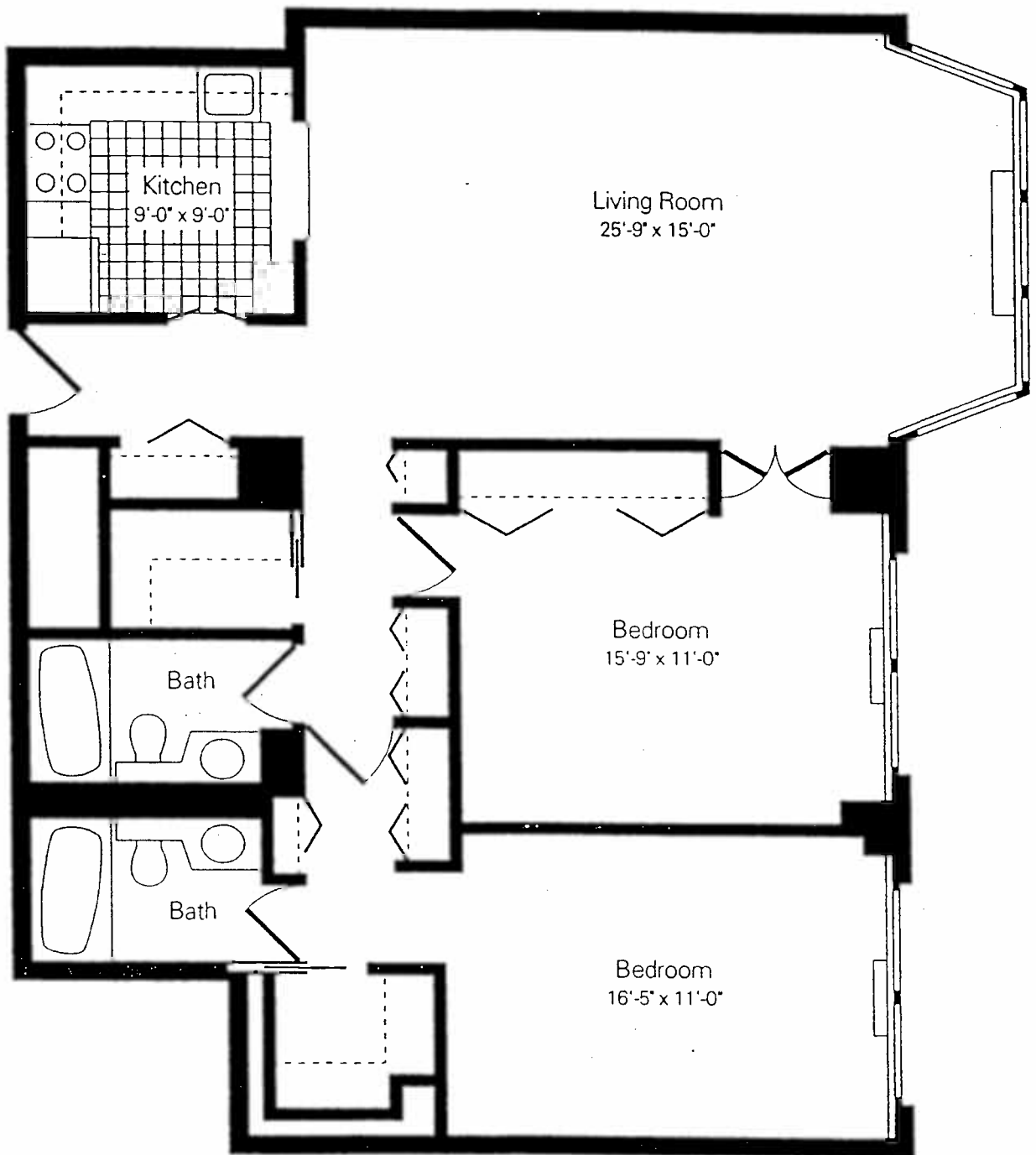


525
HAWTHORNE PLACE

525 HAWTHORNE PLACE • CHICAGO, IL 60657 • TEL. (773) 525-8272 • FAX (773) 529-6755

THE VERSAILLES

Gracious, spacious two-bedroom residence with large living/dining room and angled bay windows for a panoramic view of the city. Master suite has walk-in closet and full bath. Optional full second bedroom or library/den with floor-to-ceiling double doors. Eat-in kitchen with pass-through space for entertaining, full hall bath and plenty of closet space.



525
HAWTHORNE PLACE